

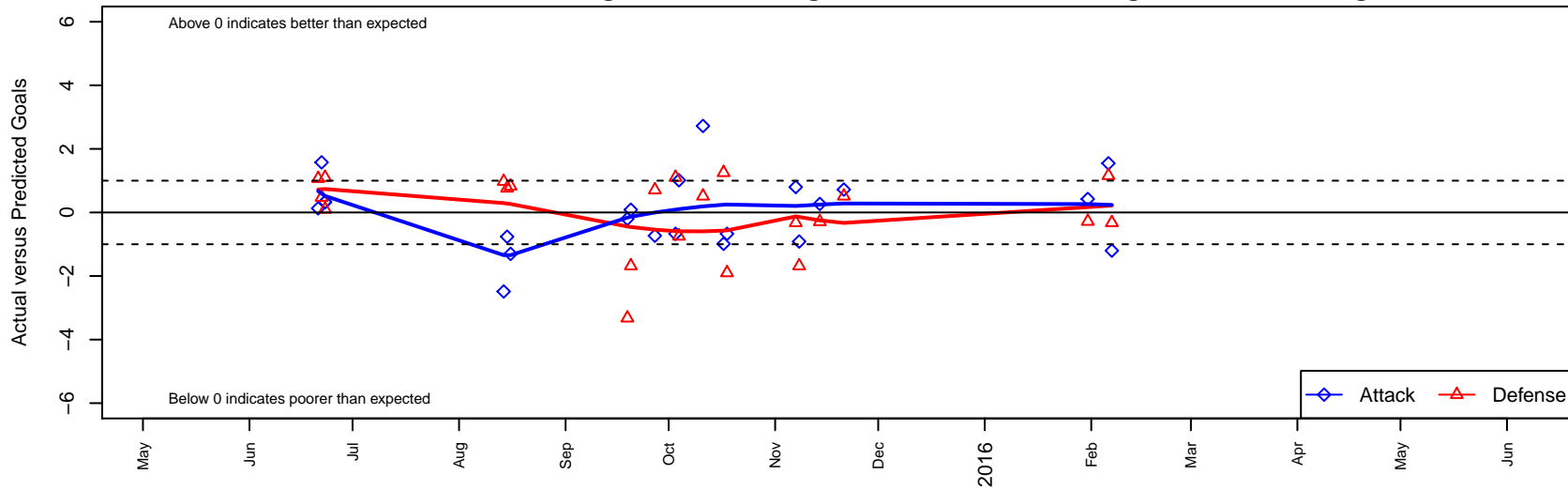
Highline Premier Blue B99

Highline Premier FC
 Burien, WA
 B99 total strength=1516
 attack=14.59 defense=9.81
 fall league = PSPL WSPL U16
 notes= Heat

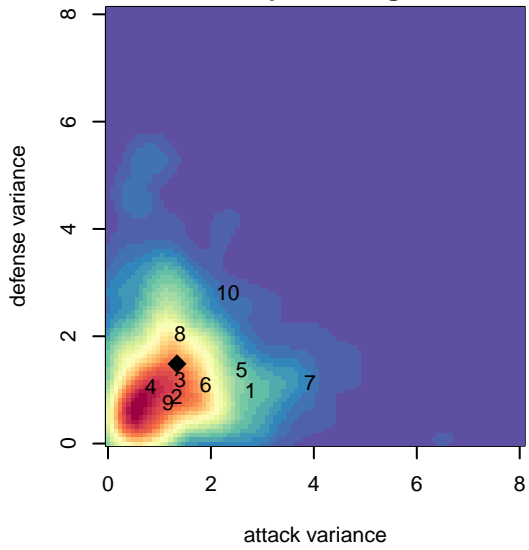
alt names used:
 Highline Premier FC Heat 99
 HIGHLINE PREMIER FCB99 BLUE
 Highline Premier FC B99 Blue
 HIGHLINE PREMIER FC B99 BLUE
 HIGHLINE PREMIER FC HEAT B99 (WA)

Venues played:
 2015 US Club Regionals Super U15
 2015 Skagit Super Cup U16 Gold
 2015 PSPL WSPL U16
 2015 WA Cup HS Gold U16

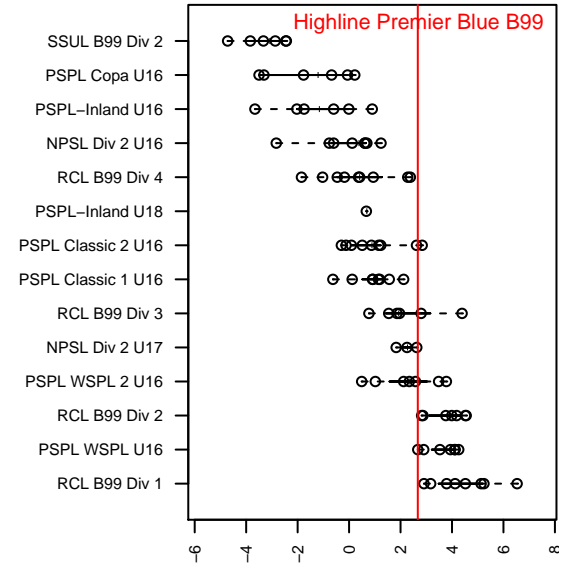
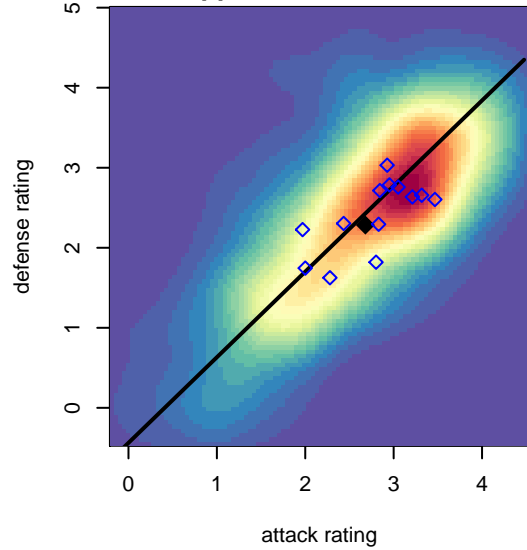
Highline Premier Blue B99
 Dots are actual minus expected GF (blue circles) and GA (red triangles).
 Blue line is smoothed change in attack strength. Red is smoothed change in defense strength.



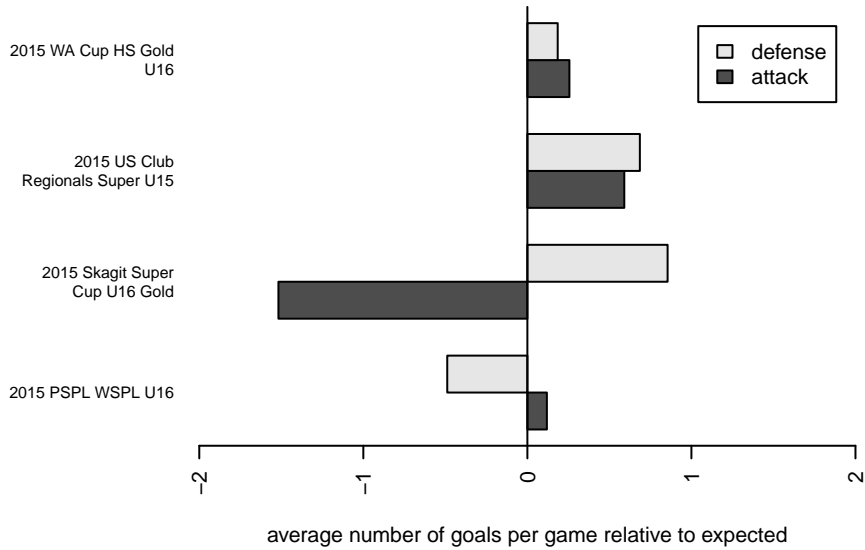
**attack and defense variance (black dot)
relative to other teams
and top 10 in region**



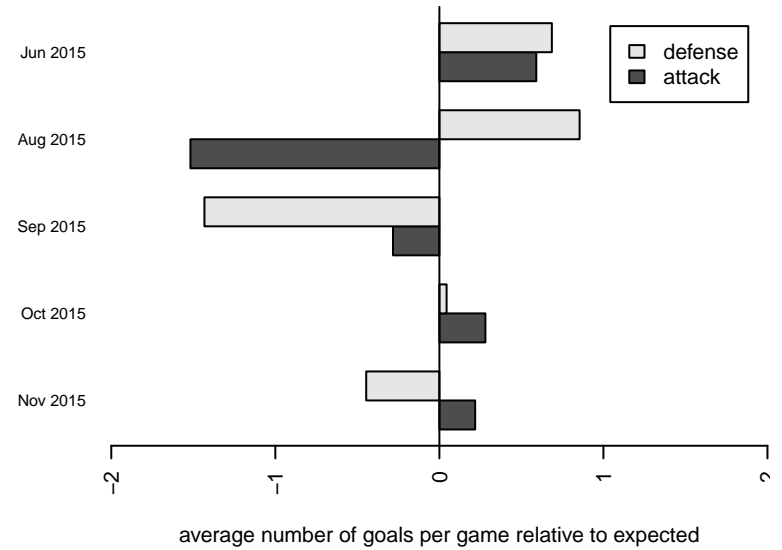
**attack and defense rating
relative to others at age
and all opponents in last 13 months**



Performance relative to 13 month average



Performance relative to 13 month average



| date | home | | away | | venue | pred.home | pred.away |
|-------------|---------------------------|---|---------------------------|---|----------------------------------|------------------|------------------|
| 2016-02-07 | Highline Premier Blue B99 | 0 | Central WA SA Navy B99 | 3 | 2015 WA Cup HS Gold U16 | 1.20 | 2.68 |
| 2016-02-06 | Highline Premier Blue B99 | 3 | RSA Elite B99 | 0 | 2015 WA Cup HS Gold U16 | 1.45 | 1.16 |
| 2016-01-31 | Highline Premier Blue B99 | 2 | FPSC Fury White B99 | 1 | 2015 WA Cup HS Gold U16 | 1.58 | 0.72 |
| 2015-11-21 | Highline Premier Blue B99 | 2 | Emerald City FC Green B99 | 1 | 2015 PSPL WSPL U16 | 1.28 | 1.51 |
| 2015-11-14 | Highline Premier Blue B99 | 1 | FPSC Fury Black B99 | 2 | 2015 PSPL WSPL U16 | 0.73 | 1.71 |
| 2015-11-08 | Highline Premier Blue B99 | 0 | ASE Emerald B99 | 4 | 2015 PSPL WSPL U16 | 0.91 | 2.32 |
| 2015-11-07 | Highline Premier Blue B99 | 2 | Central WA SA Navy B99 | 3 | 2015 PSPL WSPL U16 | 1.20 | 2.68 |
| 2015-10-18 | Washington East SC B99 | 4 | Highline Premier Blue B99 | 0 | 2015 PSPL WSPL U16 | 2.10 | 0.67 |
| 2015-10-17 | Cobra Aguilitas B99 | 2 | Highline Premier Blue B99 | 0 | 2015 PSPL WSPL U16 | 3.25 | 0.99 |
| 2015-10-11 | Emerald City FC Green B99 | 1 | Highline Premier Blue B99 | 4 | 2015 PSPL WSPL U16 | 1.51 | 1.28 |
| 2015-10-04 | Highline Premier Blue B99 | 2 | Cobra Aguilitas B99 | 4 | 2015 PSPL WSPL U16 | 0.99 | 3.25 |
| 2015-10-03 | Highline Premier Blue B99 | 0 | Washington East SC B99 | 1 | 2015 PSPL WSPL U16 | 0.67 | 2.10 |
| 2015-09-27 | FPSC Fury Black B99 | 1 | Highline Premier Blue B99 | 0 | 2015 PSPL WSPL U16 | 1.71 | 0.73 |
| 2015-09-20 | ASE Emerald B99 | 4 | Highline Premier Blue B99 | 1 | 2015 PSPL WSPL U16 | 2.32 | 0.91 |
| 2015-09-19 | Central WA SA Navy B99 | 6 | Highline Premier Blue B99 | 1 | 2015 PSPL WSPL U16 | 2.68 | 1.20 |
| 2015-08-16 | Highline Premier Blue B99 | 1 | Breakers Black 1999B | 0 | 2015 Skagit Super Cup U16 Gold | 2.30 | 0.83 |
| 2015-08-15 | Highline Premier Blue B99 | 0 | Gala FC A 1999B | 1 | 2015 Skagit Super Cup U16 Gold | 0.76 | 1.76 |
| 2015-08-14 | Highline Premier Blue B99 | 0 | FC Edmonds Forza B99 | 0 | 2015 Skagit Super Cup U16 Gold | 2.49 | 0.97 |
| 2015-06-23 | Washington East SC B99 | 1 | Highline Premier Blue B99 | 1 | 2015 US Club Regionals Super U15 | 2.10 | 0.67 |
| 2015-06-23 | Washington East SC B99 | 2 | Highline Premier Blue B99 | 1 | 2015 US Club Regionals Super U15 | 2.10 | 0.67 |
| 2015-06-22 | PCSC Cosmos B00 | 1 | Highline Premier Blue B99 | 4 | 2015 US Club Regionals Super U15 | 1.47 | 2.42 |
| 2015-06-21 | MV Bombers B99 | 1 | Highline Premier Blue B99 | 1 | 2015 US Club Regionals Super U15 | 2.07 | 0.87 |